

# Inter-Agency Rapid Needs Assessment in Borena Zone, Oromia State, Ethiopia

July 26<sup>th</sup>-29<sup>th</sup> 2011

Completed by:



Trócaire/CAFOD/SciAF Joint Office and HelpAge International

In collaboration with:



<b>Content</b>	<b>Page</b>
Executive Summary	3
Key Messages from communities:	4
Recommendations	4
Introduction	5
Objectives	5
Background	5
Climate cycle in Borena Zone	6
Methodology	6
Limitations and Challenges	7
Sector Findings - Food Aid and Security	8
Sector Findings – Water Supply	9
Sector Findings – Livestock	10
Sector Findings – Health and Nutrition	12
Sector Findings – Hygie and Sanitation	14
Sector Findings – Vulnurability	15
Current Agency Mapping	16
Annex 1: MAP	23
Annex 2: Food Aid and Security	24
Annex 3: Water access and supply	27
Annex 4: Livestock	30
Annex 5: Hygiene & Sanitation	34
Annex 6: Vulnerability	35

## Executive Summary

The Famine Early Warning Systems Network (FEWSNET) has categorised Borena zone in Southern Ethiopia in a 'emergency' phase vis-a-vis acute food insecurity (see Annex 1). On foot of this, an inter-agency mission completed an assessment of the humanitarian needs and priorities of the affected populations of Borena Zone, Oryimia state, Ethiopia from July 26<sup>th</sup>-29<sup>th</sup> 2011.

The assessment team was comprised of 14 international, national, and local agencies complemented by representatives from relevant zone and Woreda government offices. Organizations participating in the assessment were: CAFOD/Trócaire/SCIAF Joint Programme; HelpAge International; ACF; Plan International; ACORD; CARE; GOAL; GPDI; AFD; CIFA; Awassa Diocese; SOS Sahel; CISP; CISO; and representatives from the local government. The team visited eight districts of Southern Borena Zone (Yabello, Teltelle, Miyo, Moyale, Dire, Dhas, Arero, Dillo) and used rapid assessments, focus groups, and interviews with communities and local Woreda and zone officials to gather primary and secondary data.

The purpose of the assessment was to ensure:

*The priority needs of the disaster-affected population are identified through a systematic assessment of the context, risks to life with dignity and the capacity of the affected people and relevant authorities to respond (Sphere p.61)*

The teams documented the perceptions of approximately 400 persons, a sampling spread evenly across the eight targeted districts, and one which was gender representative and catered for the views of the elderly and disabled. All districts were accessible to assessment teams. Secondary data was also collated specific to health and nutrition and current agency interventions mapped.

Throughout all districts findings were largely similar: food insecurity, severe water shortages, and livestock depletion among communities are omnipresent in Borena Zone. The degree to which each district is affected diverges only minimally although Yabello district is perceptibly less affected. People are spending 3-5 hrs per day accessing water, walking on average 3-5 hours. Access to food is now a priority concern for people. However, the utility (purchasing power) of cash has diminished. Markets are struggling to supply essentials (maize, oil pulses) creating inflationary pressures on available goods. Secondary data identifies increasing cases of malnutrition with rising recorded cases of measles, acute watery diarrhoea and malaria. Vulnerable groups – women and child headed households, the elderly, and the people with disability and illness- are uniformly affected. There have been isolated reports of theft and increased inter-communal violence but there is no evidence of a systematic heightened risk to any particular vulnerable group.

The assessment also corroborates the conclusions and recommendations of the comprehensive **Early Warning Assessment**<sup>1</sup> (p.28) completed by local government agencies in early July.

<sup>1</sup> Rapid Field Assessment Report on "Ganna" Rain Performance in Borena Zone July 2011

**Key Messages from communities:**

1. The main priority for people is immediate access to food, with 7 out of 8 districts calling for a combination of food and cash as a preferred method of aid. Markets are failing to supply essential food items.
2. People require immediate access to a proximate, quality supply of water. This includes a quick supply (rationing) and also rehabilitation of current water sources (traditional wells, ponds).
3. There is escalating concern about the viability of household assets, namely livestock. Communities have evidenced severe depletion, deterioration in the health of existing animals, and a paucity of animal feed. The current rates for commercial destocking have criticised as too low. Communities are deeply apprehensive about their future livelihoods.

**Recommendations:**

1. The provision of a combination of food aid and cash to drought affected people, rather than solely cash, until markets are functional. Direct food basket delivery, the establishment of a voucher system, and linkages to private markets and/or cooperatives are should be considered as options to guarantee a food corridor to communities.
2. Increased focus on provision of water supply to affected communities through rationing and rehabilitation of water sources
3. Continued coordination on response through Governmental taskforce to ensure gaps are identified and filled, across all sectors
4. Further analysis of market functionality to identify possible bottlenecks in supply chain

## Introduction

Between July 26<sup>th</sup>-29<sup>th</sup>, Trócaire/CAFOD/SCIAF and HelpAge International in collaboration with an array of INGOs, NGOs, local organisations and governments undertook an inter-agency needs assessment to capture and distil the priorities of communities currently affected by drought.

## Objectives

The main objectives of the assessment were:

- To capture and distil the priorities of drought-affected communities in Borena Zone
- To analyse the overall humanitarian situation in Teltele, Dhas, Dire, Miyo, Dillo, Yabello, Arero and Moyale Districts of the Borena Zone, and to build on recent assessment findings by other stakeholders<sup>2</sup>

## The assessment was undertaken in recognition of:

1. A wide-ranging government needs assessment undertaken by local Government has adequately provided a contextual analysis and highlighted specifically gaps in all major sectors
2. The undertaking of a needs assessment creates legitimate expectations among interviewees of an equivalent response

## Background

Borena is a pastoral zone located in the southern part of Ethiopia bordering Somali region in the east, Northern Kenya to the south, Guji zone to the northeast and SNNPR in the West. It's one of the 18 zones in Oromia regional state located in the arid and semi-arid southern lowlands. Livestock is the vital source of food and income in a population of about 1 million residing in the zone.

In normal years the zone is one of the major sources of livestock supply in the local and international markets. During the last consecutive years, Borena has been repeatedly experiencing complex humanitarian crisis as a result of drought, conflict and disease. Massive livestock death due to drought in the last decades, particularly in the last five years, has badly affected the livelihoods of the communities and the overall food security in the area.

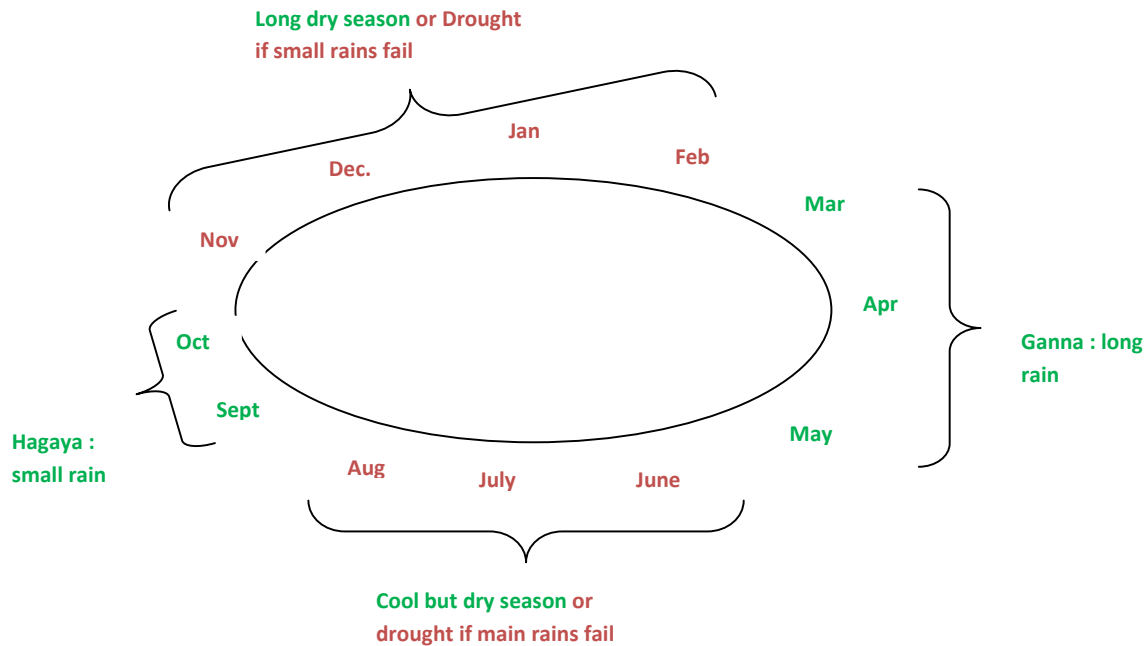
The Bi-modal rainfall regime is prominent in Borena rangelands in most of the districts. Annual average rainfall ranges from 400mm in the south to 600mm in the north. 59% the rainfall occurs during March to May and 27% in September to November. The main rainy season (March-May) locally known as *Ganna*

---

<sup>2</sup> Please Table 1 p17 for complete list interventions in Borena by agency, sector, and geographic area.

and the short rains from October-November called *Hagaya* are the two rainy seasons. *Adollasa season* is characterized by dry and cool temperature which occurs between the main rains and short rainy season.

**Climate cycle in Borena Zone**



**Methodology**

The assessment focused on the eight most drought affected districts in Borena Zone: Yabelo; Dire; Moyale; Miyo; Dillo; Dhas; Arero; and Teltele

The assessment began with a design workshop; the output of which was a set of assessment templates and field guidance notes. Six teams of 3 to 4 were formed and each team covered all the thematic themes in a specific geographical area. The field work was conducted over three days. The field teams conducted focus group discussions, key informant interviews and collected survey data from people living in the affected area. A central information management team conducted a desk review of all secondary data, mapped current interventions and analyzed the incoming field data. The information team met with the local government officials and attended the weekly Emergency Response Coordination Meeting (held each Friday) to triangulate preliminary assessment results.

A concluding workshop presented these preliminary findings from the assessment and highlighted the key intervention strategies based on beneficiaries input and priorities. In collaboration with the local government, and taking cognizance of the current NGO intervention map, it is hoped that this assessment will help steer the design of future interventions.

### **Limitations and Challenges**

- Feedback from community and teams indicated that questions were in some instances overly technical. The assessment self-regulated to a degree and such questions were in most cases skipped or avoided.
- Some remote PAs within district were difficult to access due to distance and poor infrastructure.
- Comprehensive collection and collation of data, drawing conclusive recommendations, was an inevitable challenge with time and resource constraints
- Some questions were considered sensitive and inappropriate specifically to hygiene and sanitation

## **Sector Findings**

### **1. Food Aid and Security** (see Annex 2 for district specific findings)

Most of the affected populations are now dependent on aid. Coping mechanisms include a switch to wild berries, reduction in meal number and meal size. The supply of essential food stuffs to local markets (maize, oil, pulses, salt) has been sporadic and insufficient. Communities have reported a ubiquitous decrease in the availability of cereals, pulses, oils and fats. They have also testified to a corresponding increase in price for these food stuffs. In light of both developments, the 300 Birr (PSNP<sup>3</sup> rate and matched by aid agencies) is no longer sufficient to meet basic food needs.

#### **Specific findings:**

- Only one district favoured cash transfers as the most appropriate means of aid (Dire). Communities in Yabello, Dillo, Miyo and Dias say they would prefer a combination of food and cash and communities in Arero, Moyale and Teltelle prioritised food aid immediately, with cash more suitable for the short to medium term.
- More than 75% of people interviewed in each district are worried they will not have enough food and they will be unable to eat the kinds of foods they prefer because of lack of resources.
- More than 75% have reduced the variety of food they are eating because of lack of resources
- 60% are eating much smaller meals than they feel they need to and 70% are eating less number of meals in the day before because of lack of resources
- 65% report that there has been a time when there was no food in the household, or spent the day not eating anything, or they went to bed hungry, because there was not enough food

#### **Recommendations:**

- A switch by agencies from cash transfers to either a combination of cash and food, or food aid to ensure increased food access. Options include establishment of a voucher system and linkages with private suppliers and/or cooperatives to ensure adequate provision and stimulate the market
- Increase of cash envelope above 300 Birr per household per month. Emerging consensus among NGO's in Borena and suggests a mixed basket valued at 700 birr would be an appropriate intervention strategy (based on a food calculation of 8 birr per kg for cereal).
- Market analysis to identify and resolve any bottlenecks in supply chain

<sup>3</sup> PSNP is the Government-run Productive Safety Net Programme

## 2. Water supply (see Annex 3 for district specific findings)

Traditional wells and ponds remain the central source of water supply for people in all eight districts. With the exception of Yabello, less than 20% all persons interviewed feel they have access to an adequate supply of water. There is increasing concern for the quality of water with no community considering their water supply to be in an 'average' or 'good' condition in terms of quality. Accessibility has been identified as a severe problem: communities in all districts (again, with the exception of Yabello) are forced to walk between 5-10 km for water. On average, households (and usually women) spend 3-5 hours per day accessing water.

### Key findings:

- Unprotected wells and ponds are the current main source of water with an increased proportion supplemented by tanking from agencies
- 20% of people feel they have adequate access to water
- There is growing concern regarding water quality and water treatment is now a priority
- On average people have to travel 5-10km at least for between 3-5 hours if not more for water
- Most people have adequate access to jerry cans
- Woreda's most critically affected by the drought are: Dillo; Dhas; Miyo; Moyale; Dirre

Secondary data analysis (Oxfam GB Borena Zone Draft WASH Report) also highlights:

- Many of the non-functional water points had recently been fitted with new submersible pumps, generators and fittings but it appears that installation and/or sizing/matching of components was done incorrectly, as the systems have never functioned properly
- The Zonal Water Bureau, as well as the Woreda Water Bureaus, have stated that they do not have the technical capacity to support the maintenance and/or repairs of some of the schemes
- There is no regular maintenance performed on the generators
- In addition to the components requested for replacement, site visits revealed that several other components/parts were missing and/or non-functional at the water schemes:
  - Missing distribution pipes;
  - Non-functional tap stands (even at functional water schemes, most tap stands were not functional and people were collecting their water from the cattle troughs)
- Surface water sources are the preferred water sources for livestock (due to their ability to serve large amounts of animals simultaneously) and are used by large numbers of humans as well
- Nearly all ponds in the Zone are dry (with the exception of Yabello and Arero woredas), and the majority of ponds and traditional wells are also dry.
- Approximately 40 traditional wells are in need of rehabilitation

### Recommendations:

- Scale-up in water rationing and rehabilitation of water sources to meet increased demand
- Scale-up of water rehabilitation schemes for sustainable supply

### 3. Livestock (see Annex 4 for district specific findings)

The Borena people are dependent on livestock and agri-livestock for their livelihood, as both an income and food source. The drought has put severe stress on these livelihood sectors. Total or partial income loss has been recorded across all districts. Population pressures are escalating the risk of inter-communal conflict (notably between Borana and Guji ethnic groups in competition over scarce pasture and water). Coping strategies are predominately increased migration, a switch to casual labour, and sale of livestock. Increased migration is having a number of deleterious effects: Population movements are escalating the risk of inter-communal conflict; over-grazing is wide-spread and livestock become further emaciated. The impulse to sell livestock has deflated the market price particularly for cattle. Communities have voiced frustration at the current cash rate paid for slaughter destocking. Predictions of for next rainy season are pessimistic- elders in all districts state that the recent climate shifts are a sign that future weather may continue to be erratic.

#### Participatory Response Identification Matrix (PRIM)

The interagency assessment used the Livelihoods in Emergencies Guidelines and Standards (LEGS) Participatory Response Identification Matrix (PRIM) to identify which livestock interventions are most appropriate and feasible, in the context of protecting and rebuilding livelihood assets.

A range of technical interventions- destocking, veterinary services, feed, water, shelter and provision of livestock- are discussed with communities in the context of three livelihoods objectives: providing rapid assistance; protecting assets; and rebuilding assets. The community prioritise supporting their livelihoods in the emergency context, and the issue of how the different interventions fit in and overlaps within the phasing of the emergency is debated.

Accordingly, with a rate of '1' being the most important priority and '6' being the least important, it was possible to discern the following trend in all the eight districts;

Technical interventions	Districts								Average Rating
	Arrero	Dillo	Dire	Miyo	Moyale	Teltele	Yabello	Dhas	
Destocking	1	3	3	3	3	3	4	3	2.875 (3 <sup>rd</sup> )
Vet Services	3	4	4	4	4	4	3	4	3.75 (4 <sup>th</sup> )
Feed for Livestock	2	1	1	2	2	1	1	1	1.375 (1 <sup>st</sup> )
Water for Livestock	4	2	2	1	1	2	2	2	2 (2 <sup>nd</sup> )
Shelter for Livestock	6	6	6	6	6	6	6	6	6 (6 <sup>th</sup> )

Provision of livestock	5	5	5	5	5	5	5	5	5 (5 <sup>th</sup> )
------------------------	---	---	---	---	---	---	---	---	----------------------

Priorities for communities in all 8 districts include;

- Feed and water for livestock (top two priorities).
- Livestock destocking (which is rated to be the 3<sup>rd</sup> priority) should be where possible commercial destocking, not slaughter destocking.
- Almost all the communities agreed that a significant restocking programme should be a key component of the early recovery work.

Through a PRIM matrix, a visual summary of which emergency livestock interventions are possible and potentially most effective in protecting livelihoods is provided below. The technical interventions are listed based on their importance and the right-hand side of the matrix shows the timing of their interventions in relation to the phase the emergency has reached (which was agreed to be in 'emergency phase' by all PRIM participants based on their own definitions specific to the context)

Technical interventions	Livelihoods Objectives			Emergency Phases			
	Rapid assistance	Protect assets	Rebuild assets	Alert	Alarm	Emergency	Recovery
Feed	*****	****	**			→	
Water	*****	****	**			→	
Destocking	*****	*****	*			→	
Vet Services	****	****	****			→	→
Provision of livestock	NA	NA	*****				→
Shelter	NA	NA	NA	NA	NA	NA	NA

#### 4. Health & Nutrition

The June 2011 update of the national nutrition matrix released by the Federal Emergency Nutrition Coordination Unit (FENCUC) indicated that there is only an average coverage of OTP/TSF of 54.5% in six of the lowlands of six of the Districts in Borena (including Arrero, Dire, Moyale, Miyo, Teltele and Yabello).

District	Actors/Current Intervention	Hotspot Priority (as set by the Federal Government)	U5 Population (16.5%)	Number of OTP sites (Health Facilities)	Coverage (OTP/TSF)
Arrero	MERLIN/GOV (TFP (TFU & OTP) + TSF)	1	8344	12	70%
Dirre	CARE /GOV (TFP (TFU & OTP) + TSF)	1	12803	18	6%
Moyale	CARE /GOV (TFP (TFU & OTP) + TSF)	1	5764	10	56%
Miyo	CARE /GOV (OTP/TSF)	1	8920	8	62%
Teltele	CARE/GOV/GOAL (TFP (TFU & OTP) + TSF)	1	12894	25	100%
Yabello	Goal/ GOV (TFP (TFU & OTP) + TSF)	2	15657	9	33%

Comparing the trends of admission (TFP) in six of the lowland Districts of the Borena Zone in January 2011 to that of May 2011 admission, there is just over 315% increase in admission (June 2011 update of the national nutrition matrix released by the Federal Emergency Nutrition Coordination Unit (FENCUC)).

The latest Enhanced Outreach Strategy (EOS) screening report identified over 10,184 cases of acute malnutrition (42% U5 children) in all districts of the zone. While the major problem seems to be the lack of efficient nutrition surveillance system and the existing of reliable nutrition data, the June 2011 Government led assessment has identified a gap of 1MT of F-75, 25.7MT of F-100 and about 4803MT of plumpy nut requirements for the coming six months only in the eight lowland Districts of the Borena Zone. The June 2011 Government led assessment has also indicated that around eight suspected measles cases were reported Moyale the sample of which is being analyzed in laboratory.

Woreda	Additional F-75 requirements (in MT)	Additional F-100 requirements (in MT)	Additional Plumpynut requirements (in MT)
Arrero	0	0	233
Dillo	1	5.1	311
Dire	0	10.3	127
Dhas	0	0	138
Miyo	0	0	1623
Moyale	0	10.3	692
Teltele	0	0	1282
Yabello	0	0	397
<b>Total</b>	<b>1</b>	<b>25.7</b>	<b>4803</b>

Woreda level data has also indicated increased occurrences of dysentery and malaria in some areas and that around eight suspected measles cases were reported Moyale the sample of which is being analyzed in laboratory.

#### Key findings:

- A clear and significant rise in number of admission of the acutely malnourished patients which includes U5 children, pregnant and lactating women and the elderly.
- While the need is extensive, only a limited number of actors (CARE, GOAL, MERLIN and Government) are providing nutrition and health support and the overall coverage remains small relative to need
- Most of the District Health Offices are facing logistical constraints to mobilize existing resources (F-75, F-100, Plumpynut and Famix)
- It was possible to discern that that there is occurrence of Dysentery (AWD) and Malaria in some areas. Measles cases are increasing and there are over 50 cases reported in the zone.
- The ongoing ritual ceremony in Borena Zone ( Gadamojjii and Gubisa ) involving some seven lowland Districts is expected to attract tens of thousands of people further exacerbating hygiene and human health care issues

## 5. Hygiene & Sanitation (see Annex 4 for district specific findings)

Communities are reporting decreased standards in hygiene and sanitation. Increased levels of migration are seen as a contributory factor. On average, 50% people feel they have sufficient sanitary items to ensure their personal hygiene, dignity and well-being. There is not a priority concern about supply of NFIs and hygiene kits relative to other areas of need and most communities feel they have a sufficient number of containers to store and carry water although there are specific needs highlighted in Dhas. It must also be noted there was considerable sensitivities with questions related to hygiene and sanitary needs and with some communities very reluctant to answer specific questions. This inevitably compromises the quality of the data.

### Key findings:

- On average 50% of people feel they have adequate sufficient clothing to ensure their health, dignity, and well-being although considerable less so in Miyo district.
- The average drops noticeably for the proportion of people who feel they have sufficient access to sanitary items to ensure their personal hygiene, dignity, and well-being.
- There is difficulty in discerning any pattern in terms of additional needs for clothing or bedding of vulnerable groups
- On average, 70% of people said they have access to containers to store and carry water.

## 6. Vulnerability (see Annex 5 for district specific findings)

Potential vulnerable groups – women-headed households; child-headed households; older people; and people with disability and illness- are facing shortages. On average, across most districts, less than 20% of all groups consider themselves to have enough access to adequate food, water, health care, and sanitation and hygiene. Heightened risks to these groups have not materialised yet, or at the very least have not been reported by communities. There were no highlighted cases of physical or sexual violence. Strong social cohesion among Borena communities is perceived as an important mitigating factor. In focal group discussions and interviews there was no case or evidence of increased marginalisation. There have isolated reports of increased theft (livestock, cash) in communities, although not targeted at specific groups.

Category	Adequate access to:				
	Health Care	Food	Water	Sanitation & Hygiene	Shelter
Women	< 20%	< 20%	< 20%	20%	80%>100%
Children	20% >40%	< 20%	< 20%	< 20%	80%>100%
Older People	20% > 40%	< 20%	< 20%	< 20%	80%>100%
People with disability or illness	< 20%	20% > 40%	< 20%	< 20%	80%>100%

### Key findings

- Antedotal evidence that some supplementary feeding programmes are not reaching disabled or female headed households in Dhas although lactating and pregnant women have access
- Access to health care in general highlighted by communities as an issue in Arero and Dhas with better coverage reported in Teltelle, Dire and Yabello
- Access to food and water is equally poor across all vulnerable groups in all districts
- While the average across all districts is low, Teltelle and Yabello is reported moderately better access vis-a-vis health, food and water access
- No reported incidents of physical or sexual abuse in communities with very strong community bonds recognised as an important mitigating factor in Borena
- Communities do not perceive any major risks although isolated reports of theft in Miyo and Dhas

### Recommendations

- Specific targeting of vulnerable groups in all interventions- particularly women-headed households; child-headed households and the elderly.

**Table 1: Current Agency Mapping**

[NB: The number of interventions and agencies operating is subject to rapid change and this may not be exhaustive (e.g expansion of Oxfam GB programme not captured fully here). Please see minutes of weekly Government Taskforce Zonal meeting or contact individual agencies for latest geographic interventions]

Agency	District	Intervention types	Action
GOAL	Abbaya	Supplementary feeding	Supplementary feeding intervention is completed successfully in all Woredas except Galana Woreda. 15,792 beneficiaries were addressed for three months as a plan.
ACF	Arero	Animal health	next arranged to shift the vaccination team to Arero and Dire Woredas to reinforce the campaign.
SC US	Arero	Animal health	Support mass vaccination in Arero District .
GOAL	Arero	Supplementary feeding	Supplementary feeding intervention is completed successfully in all Woredas except Galana Woreda. 15,792 beneficiaries were addressed for three months as a plan.
Merlin Ethiopia	Arero	Supplementary feeding	Deliver supplementary food items for 1798 targeted beneficiaries in Dhas and Arero wordas (33PA's). A total of 44.83MT CSB and 4.71MT of oil distributed for three months, and the program is completed.
SC US	Arero	Water scheme maintenance	Complete the maintain Duse motorized scheme and make functional, contribute more the 230,000 birr.
World vision	D/Dawa	Animal health	Support animal health vaccination with finance and transport facility for 2 worada
World vision	D/Dawa	Seed provision	Seed provision for Agro-pastoral communities were proposed and waiting for approval.
World vision	D/Dawa	WASH	Procurement of water chemical for two woreda is under process.
CONCERN	Dhas	Animal health	Facilitated the distribution of veterinary emergency drugs in 12 PA's of Dhas woreda in consultation with woreda taskforce.
GOAL	Dhas	Supplementary feeding	Supplementary feeding intervention is completed successfully in all Woredas except Galana Woreda. 15,792 beneficiaries were addressed for three months as a plan.

Merlin Ethiopia	Dhas	Supplementary feeding	Deliver supplementary food items for 1798 targeted beneficiaries in Dhas and Arero wordas (33PA's). A total of 44.83MT CSB and 4.71MT of oil distributed for three months, and the program is completed.
SOS Sahel	Dhas	Water Scheme maintenance	The construction of 3 ponds(Nagalle in Dilo,Gufu and Sallesa adi pond in Dhas) and 2 traditional wells (Haro-guchi and Halake Ganno wells) through cash for work approach is in process .
SOS Sahel	Dhas	Water Scheme maintenance	Additional hand tool were purchased and distributed to Gorile and Dhas PAs.
ACF	Dhas	Animal health	Mass vaccination of CBPP is completed in two wordes, (Miyo and Dhas)
Oxfam GB	Dhas	Water rationing	Water distribution, WASH
CARE	Dilo	Animal health	Commercial destocking intervention is in action through 3 cooperatives , so far 281 cattle purchased with seed many allocated from CARE.
CARE	Dilo	Animal health	CARE support annual vaccination in 4 wordedas with logistic and finance. (Moyalle,Yaballo,Teltale and Dilo)
CONCERN	Dilo	Animal health	Animal health service (treatment) in Dilo wordeda in 11 PA's were supported.
AFD	Dilo	Cash transfer	A drought response project funded by HAI/CST livelihood based interventions are planned in two wordedas for beneficiaries of 2400,1st and 2nd round is completed.
AFD	Dilo	Livestock feed	Establishment of new feeding center in two wordedas with fund obtained from Help Age is in progress. Sites were identified, purchasing process is moving ahead, Fencing and through preparation is complete.
GOAL	Dilo	Supplementary feeding	Supplementary feeding intervention is completed successfully in all Woredas except Galana Woreda. 15,792 beneficiaries were addressed for three months as a plan.
CONCERN (Now Oxfam?)	Dilo	Water rationing	Water distribution was underway in three PA's of Dilo Woreda (Kadim, Chirate and Arbale) so far 180,000lit. of water is delivered for 835 hhs.

SOS Sahel	Dilo	Water Scheme maintenance	The construction of 3 ponds(Nagalle in Dilo,Gufu and Sallesa adi pond in Dhas) and 2 traditional wells (Haro-guchi and Halake Ganno wells) through cash for work approach is in process .
ACF	Dire	Animal health	next arranged to shift the vaccination team to Arero and Dire Woredas to reinforce the campaign.
ACORD	Dire	Animal health	Provide support on mass vaccination campaign with logistic and allowance for health technicians.
AFD	Dire	Livestock feed	Establishment of new feeding center in two woredas with fund obtained from Help Age is in progress. Sites were identified, purchasing process is moving ahead, Fencing and through preparation is complete.
CARE	Dire	Nutrition	Crises modifier phase I completed II phase approved at the present with fund costs 566.959.
GOAL	Dire	Seed provision	Request for emergency crop seed requirement for (Hagaya,2011) were submitted to Donor and waiting for the response.
CARE	Dire	Slaughter destocking	Dire in Magado and H/Samaro - 1173 (92%) animals are slaughtered and 3368 HH benefited.
FAO	Dire	Slaughter destocking	2168 HHs were able to sell 2389 animals (1084 cattle, 442 sheep and 863 goats) for slaughter. A total of 2912 HHs benefited from meat distribution of slaughtered livestock species as a source of protein.
ACORD	Dire	Slaughter destocking	The intervention was conducted in Harallo and Soda PA's. up to recent time ,375 shoats and 124 cattle were slaughtered from this19 cattle are disposed . About 1354 HH have been benefited from the meat, apart from the cash transfer.
GOAL	Dire	Supplementary feeding	Supplementary feeding intervention is completed successfully in all Woredas except Galana Woreda. 15,792 beneficiaries were addressed for three months as a plan.
ACORD	Dire	Water rationing	Hire three water trucks for two woredas, and start to supply water for needy communities.

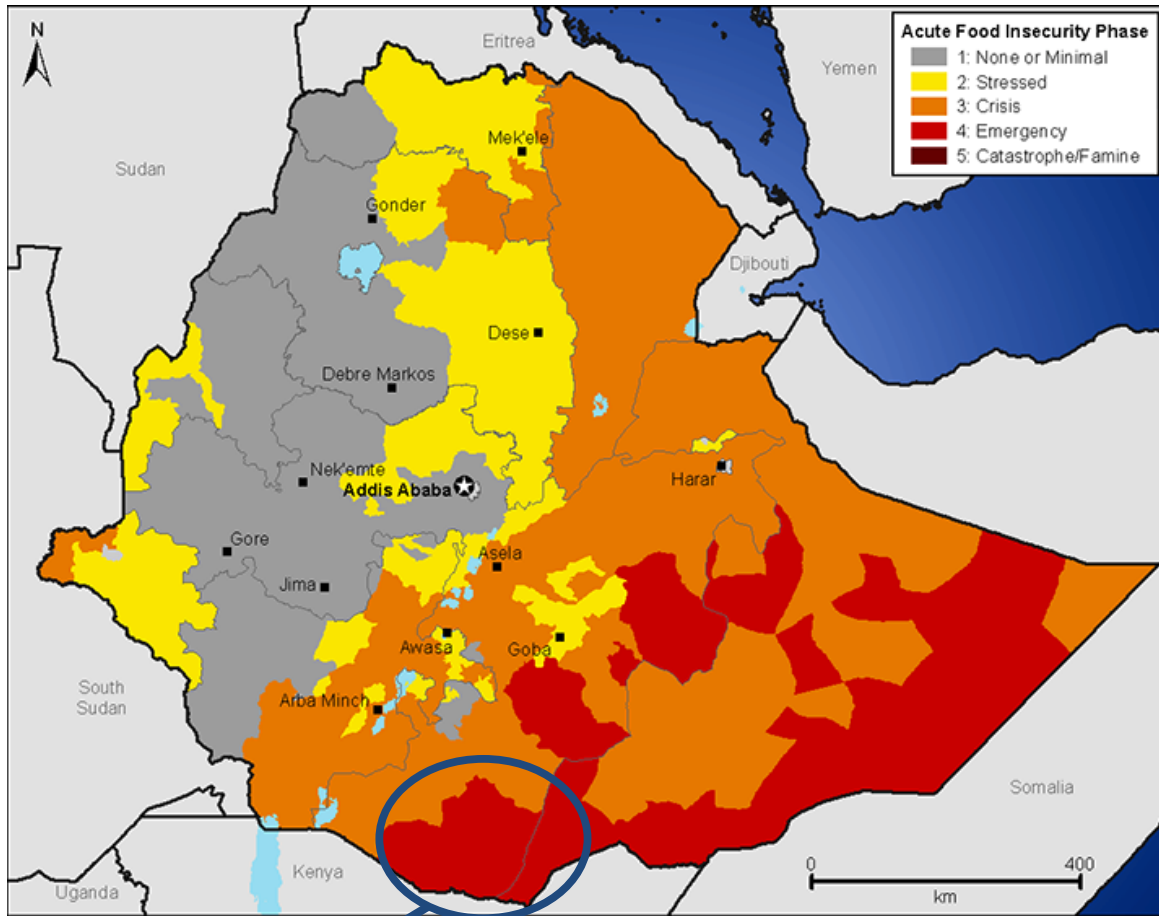
GOAL	Dire	Water rationing	Water rationing is still in operation in three woredas. To date 29,840,000 lit was distributed for 80,186 communities. Total water supplied PAs are 46 in three Woredas, and weekly distribution is 1,974,000 liter.
ACORD	Dire	Water scheme maintenance	Plan to rehabilitate 4 water schemes in two woredas, and the procurement of spare part is under process.
CARE	Dire	Water scheme maintenance	3 batteries were purchased and two were sent to Melbana and Chari.
SOS Sahel	Dire	Water Scheme maintenance	The construction of 3 ponds (Nagalle in Dilo, Gufu and Sallesa adi pond in Dhas) and 2 traditional wells (Haro-guchi and Halake Ganno wells) through cash for work approach is in process.
AFD	Dire	Cash transfer	A drought response project funded by HAI/CST livelihood based interventions are planned in two woredas for beneficiaries of 2400, 1st and 2nd round is completed.
World vision	Melka Soda	Animal health	Support animal health vaccination with finance and transport facility for 2 woredas
World vision	Melka Soda	Seed provision	Seed provision for Agro-pastoral communities were proposed and waiting for approval.
GOAL	Melka Soda	Supplementary feeding	Supplementary feeding intervention is completed successfully in all Woredas except Galana Woreda. 15,792 beneficiaries were addressed for three months as a plan.
World vision	Melka Soda	WASH	Procurement of water chemical for two woredas is under process.
CARE	Miyo	Nutrition	Crises modifier phase I completed II phase approved at the present with fund costs 566.959.
GOAL	Miyo	Seed provision	Request for emergency crop seed requirement for (Hagaya, 2011) were submitted to Donor and waiting for the response.
FAO	Miyo	Slaughter destocking	2169 HHs were able to sell 2389 animals (1084 cattle, 442 sheep and 863 goats) for slaughter. A total of 2912 HHs benefited from meat distribution of slaughtered livestock species as a source of protein.

GOAL	Miyo	Supplementary feeding	Supplementary feeding intervention is completed successfully in all Woredas except Galana Woreda. 15,792 beneficiaries were addressed for three months as a plan.
ACORD	Miyo	Water rationing	Hire three water trucks for two woredas, and start to supply water for needy communities.
GOAL	Miyo	Water rationing	Water rationing is still in operation in three woredas. To date 29,840,000 lit was distributed for 80,186 communities. Total water supplied PAs are 46 in three Woredas, and weekly distribution is 1,974,000 liter.
ACORD	Miyo	Water scheme maintenance	Plan to rehabilitate 4 water schemes in two woredas, and the procurement of spare part is under process.
GPDI	Miyo	Water scheme maintenance	Direct cash transfer for 2400 HHs which are most affected in Miyo and Moyale woreda in 15 PA's 1st and 2nd round was completed and it is on going intervention
GPDI	Miyo	Water scheme maintenance	Cash for work through rehabilitation of 6 ponds in Miyo, Teltale 12 ponds were completed and the program is ready to terminate.
GPDI	Miyo	Water scheme maintenance	New emergency response project in Arero, Melkasoda and D/Dawa (6 ponds & 6 ella rehabilitation, 1 new pond construction, 800 hec bush clearing) groundwork is completed and it is on going activity.
ACF	Miyo	Animal health	Mass vaccination of CBPP is completed in two woreds, (Miyo and Dhas)
CARE	Moyale	Animal health	Commercial destocking intervention is in action through 3 cooperatives, so far 281 cattle purchased with seed many allocated from CARE.
CARE	Moyale	Animal health	CARE support annual vaccination in 4 woredas with logistic and finance. (Moyalle, Yaballo, Teltale and Dilo)
CARE	Moyale	Nutrition	Crises modifier phase I completed II phase approved at the present with fund costs 566.959.
CARE	Moyale	Slaughter destocking	Moyalle in dambi, T/mado and Bokola - 1173 (92%) animals are slaughtered and 3368 HH benefited.

GOAL	Moyale	Supplementary feeding	Supplementary feeding intervention is completed successfully in all Woredas except Galana Woreda. 15,792 beneficiaries were addressed for three months as a plan.
GOAL	Moyale	Water rationing	Water rationing is still in operation in three woredas. To date 29,840,000 lit was distributed for 80,186 communities. Total water supplied PAs are 46 in three Woredas, and weekly distribution is 1,974,000 liter.
CISP	Moyale	Water scheme maintenance	Support maintenance of legasure water scheme.
CISP	Moyale	Water scheme maintenance	Procure 150,000 sachet of water guard and handover to Zone health office.
GPDI	Moyale	Water scheme maintenance	Direct cash transfer for 2400 HHs which are most affected in Miyo and Moyale woreda in 15 PA's 1st and 2nd round was completed and it is on going intervention
GPDI	Moyale	Water scheme maintenance	Cash for work through rehabilitation of 6 ponds in Miyo, Teltale 12 ponds were completed and the program is ready to terminate.
GPDI	Moyale	Water scheme maintenance	New emergency response project in Arero, Melkasoda and D/Dawa ( 6 ponds & 6 ella rehabilitation, 1 new pond construction, 800 hec bush clearing) groundwork is completed and it is on going activity.
CARE	Teltele	Animal health	Commercial destocking intervention is in action through 3 cooperatives , so far 281 cattle purchased with seed many allocated from CARE.
CARE	Teltele	Animal health	CARE support annual vaccination in 4 woredas with logistic and finance. (Moyalle, Yaballo, Teltale and Dilo)
CARE	Teltele	Slaughter destocking	Taltale in Orbate & Sarite PA's in 25 centers 1173 (92%) animals are slaughtered and 3368 HH benefited.
GOAL	Teltele	Supplementary feeding	Supplementary feeding intervention is completed successfully in all Woredas except Galana Woreda. 15,792 beneficiaries were addressed for three months as a plan.
CARE	Teltele	Water scheme maintenance	3 batteries were purchased and two were sent to Melbana and Chari.

CARE	Yabelo	Animal health	Commercial destocking intervention is in action through 3 cooperatives , so far 281 cattle purchased with seed many allocated from CARE.
CARE	Yabelo	Animal health	CARE support annual vaccination in 4 woredas with logistic and finance. (Moyalle, Yaballo, Teltale and Dilo)
GOAL	Yabelo	Seed provision	Request for emergency crop seed requirement for (Hagaya,2011) were submitted to Donor and waiting for the response.
GOAL	Yabelo	Supplementary feeding	Supplementary feeding intervention is completed successfully in all Woredas except Galana Woreda. 15,792 beneficiaries were addressed for three months as a plan.
GOAL	Yabelo	WASH	500,000 water purifier chemical was purchased and transported to Yaballo.
CARE	Yabelo	Water scheme maintenance	Rehabilitation of 3 hand pumps in Yaballoo through DERIPP and ECHO, and 1Teadditional well completed through PLI-2 3 batteries were purchased and two were sent to Melbana and Chari.

Annex 1: MAP



Borena Zone, Oromia State, Ethiopia

Source: FEWSNET: <http://www.fews.net/pages/country.aspx?gb=et> accessed on: August 3, 2011

## Annex 2: Food Aid and Security

Question	Dillo	Miyo	Dhas	Moyale	Yabello	Arero	Teltelle	Dire
What proportion of people are worried they will not have enough food	>75%	>75%	>75%	>75%	>75%	>75%	>75%	>75%
What proportion of people are unable to eat the kinds of foods they prefer because of a lack of resources	>75%	>75%	>75%	>75%	>75%	>75%	>75%	>75%
What proportion of people are eating just a few kinds of food day after day because of lack of resources	>75%	>75%	>75%	>75%	>75%	>75%	50%>75%	>75%
What proportion of people are eating smaller meals than they feel they need because there was not enough food?	>75%	>75%	>75%	>75%	>75%	>75%	50%>75%	>75%
What proportion of people are eating fewer meals in a day than before because there is not enough food?	>75%	>75%	>75%	>75%	>75%	>75%	50%>75%	>75%
What proportion of people report that there has been a time when there was no food in the household, or they spent the day not eating anything, or they went to bed hungry, because there was not enough food	50%>75%	50%>75%	50%>75%	>75%	50%>75%	50%>75%	>75%	50%>75%
What proportion of people are eating food that they do not want to eat because of a lack of resources to obtain other types of food	50%>75%	50%>75%	50%>75%	50%>75%	50%>75%	N/A	50%>75%	50%>75%

Method	Dillo	Miyo	Dhas	Moyale	Yabello	Arero	Teltelle	Dire
Purchasing Food								
Consuming Food Aid								
Working for Food								
Begging for Food								
Hunting or Fishing								
Collection of wild foods								
Exchange or barter for food								
Borrowing Food								

Charcoal production noted in Moyale

Changes in availability of:	Dillo	Miyo	Dhas	Moyale	Yabello	Arero	Teltelle	Dire
Cereals	Less	Less	Less	Less	Less	Less	Less	Less
Roots/Tubers	Less	Less	Less	Less	Less	Less	Less	Less
Pulses/legumes	Less	Less	Less	Less	Less	Less	Less	Less
Oils/fats	Less	Less	Less	Less	Less	Less	Less	Less
Meat/fish/eggs	Less	More	N/A	More	N/A	More	Less	Less
Vegetables/fruits	Less	Less	N/A	Less	Less	N/A	Less	Less
Infant Formula	Less	Less	Less	Less	Less	N/A	N/A	N/A

Changes in price:	Dillo	Miyo	Dhas	Moyale	Yabello	Arero	Teltelle	Dire
Cereals	Higher	Higher	Higher	Higher	Higher	Higher	Higher	Higher
Roots/Tubers	Higher	Higher	Higher	Higher	Higher	Higher	Higher	Higher
Pulses/legumes	Higher	Higher	Higher	Higher	Higher	Higher	Higher	Higher
Oils/fats	Higher	Higher	Higher	Higher	Higher	Higher	Higher	Higher
Meat/fish/eggs	Higher	Lower	N/A	Lower	Higher	Lower	Higher	Higher
Vegetables/fruits	Higher	Higher	N/A	Higher	Higher	N/A	Higher	Higher
Infant Formula	Higher	Higher	Higher	Higher	Higher	N/A	N/A	N/A

<b>Difficulties obtaining food</b>	<b>Dillo</b>	<b>Miyo</b>	<b>Dhas</b>	<b>Moyale</b>	<b>Yabello</b>	<b>Arero</b>	<b>Teltelle</b>	<b>Dire</b>
Children under 5	80%>100%	60%>80%	80%>100%	80%>100%	20%>40%	80%>100%	40%>60%	80%>100%
Mothers and Lactating mothers	80%>100%	60%>80%	80%>100%	80%>100%	20%>40%	80%>100%	40%>60%	80%>100%
Female Headed Households	60%>80%	20%>40%	80%>100%	60%>80%	20%>40%	80%>100%	60%>80%	60%>80%
Older People	60%>80%	40%>60%	80%>100%	60%>80%	0>20%	80%>100%	60%>80%	60%>80%

<b>Access to Markets</b>	<b>Dillo</b>	<b>Miyo</b>	<b>Dhas</b>	<b>Moyale</b>	<b>Yabello</b>	<b>Arero</b>	<b>Teltelle</b>	<b>Dire</b>
Always								
Mostly								
Sometimes								
Seldom								
Never								

<b>Are there safety issues when accessing markets</b>	<b>Dillo</b>	<b>Miyo</b>	<b>Dhas</b>	<b>Moyale</b>	<b>Yabello</b>	<b>Arero</b>	<b>Teltelle</b>	<b>Dire</b>
Yes								
Mostly								
Sometimes								
Seldom								
Never								

<b>What is the most appropriate form of aid at present?</b>	<b>Dillo</b>	<b>Miyo</b>	<b>Dhas</b>	<b>Moyale</b>	<b>Yabello</b>	<b>Arero</b>	<b>Teltelle</b>	<b>Dire</b>
Cash								

Cash and Food								
Food only								
Food now, cash later								
Other								

**Annex 3: Water access and supply**

Question	Dillo	Miyo	Dhas	Moyale	Yabello	Arero	Teltelle	Dire
What is the main source of water for drinking and cooking?	Tanker	Ponds	Tap/ unprotected well	Ponds	Surface water/ unprotecte d well	Unprotecte d well	Ponds	Tap/ unprotecte d well
What is the main source for washing and bathing?	Hand pump/wel l	Unprotecte d well	Unprotecte d well	Ponds	Surface water/ unprotecte d well	Unprotecte d well	Ponds	Ponds

What proportion of people has adequate access to water?	Dillo	Miyo	Dhas	Moyale	Yabello	Arero	Teltelle	Dire
Children under five	0>20%	0>20%	0>20%	20>40%	20>40%	0>20%	0>20%	0>20%
Mothers and lactating mothers	0>20%	0>20%	0>20%	20>40%	20>40%	0>20%	0>20%	0>20%
Female headed households	0>20%	0>20%	0>20%	20>40%	20>40%	0>20%	20>40%	0>20%
Older people	0>20%	0>20%	0>20%	20>40%	20>40%	0>20%	0>20%	0>20%

What proportion of livestock have adequate access to water?	Dillo	Miyo	Dhas	Moyale	Yabello	Arero	Teltelle	Dire
80>100%								
60>80%								

40>60%								
20>40%								
0>20%								

Quality of water	Dillo	Miyo	Dhas	Moyale	Yabello	Arero	Teltelle	Dire
Good								
Average								
Must be treated								
Suitable for animals only								
No water								

Water reserve	Dillo	Miyo	Dhas	Moyale	Yabello	Arero	Teltelle	Dire
No problem								
One month								
2 weeks								
One week								
None								

How far do people have to travel to collect water?	Dillo	Miyo	Dhas	Moyale	Yabello	Arero	Teltelle	Dire
Up to 10 km								
Up to 5 km								
Up to 2 km								
Less than 1 km								

How long does it take to collect water?	Dillo	Miyo	Dhas	Moyale	Yabello	Arero	Teltelle	Dire
More than 5 hours								
Between 3 to 5 hours								

Between 1 to 2 hours								
less than 1 hour								

How do you carry and store water	Dillo	Miyo	Dhas	Moyale	Yabello	Arero	Teltelle	Dire
Sealed container								
Open bucket								
Anything that's available								
Nothing								

What are the water priorities in your area?	Dillo	Miyo	Dhas	Moyale	Yabello	Arero	Teltelle	Dire
Water tanker								
Repair traditional well								
Repair pond								
Repair borehole								

What are the services you require NOW in your area?	Dillo	Miyo	Dhas	Moyale	Yabello	Arero	Teltelle	Dire
Water tanker								
Repair traditional well								
Repair pond								
Repair borehole								

**Annex 4: Livestock**

What are the main livelihood strategies in the affected are in 'usual' times	Dillo	Miyo	Dhas	Moyale	Yabello	Arero	Teltelle	Dire
Livestock								
Agri-livestock								
Agriculture								
Trading								
Wage Labour								

What percentage of food is derived from livestock in 'usual' times	Dillo	Miyo	Dhas	Moyale	Yabello	Arero	Teltelle	Dire
100%								
80%								
60%								
40%								
20%								
less than 20%								

What percentage of income is derived from livestock in 'usual' times	Dillo	Miyo	Dhas	Moyale	Yabello	Arero	Teltelle	Dire
100%								
80%								
60%								
40%								
20%								
less than 20%								

What are the main coping strategies in difficult times?	Dillo	Miyo	Dhas	Moyale	Yabello	Arero	Teltelle	Dire
Sale of livestock								
Destocking								
Migration								
Exchange								
wage labour								

Do these strategies have negative implications for future livelihoods security?	Dillo	Miyo	Dhas	Moyale	Yabello	Arero	Teltelle	Dire
Serious								
Some impact								
Some short term impact								
No impact								

Are there signs that coping strategy indicators are being implemented?	Dillo	Miyo	Dhas	Moyale	Yabello	Arero	Teltelle	Dire
Many								
Some signs								
Some initial signs								
No signs								

What has been the impact of the drought on livestock management?	Dillo	Miyo	Dhas	Moyale	Yabello	Arero	Teltelle	Dire
Great impact								
Some impact								
Some initial impact								
No impact								

What is the impact of drought on access to grazing?	Dillo	Miyo	Dhas	Moyale	Yabello	Arero	Teltelle	Dire
Great impact								
Some impact								

Some initial impact								
No impact								

What is the impact of the drought on the sale of livestock?	Dillo	Miyo	Dhas	Moyale	Yabello	Arero	Teltelle	Dire
Cattle	Some income loss	Total loss	Total loss	Total Loss	Total loss	Some income loss	Some income loss	Total loss
Sheep	Some income loss	Total loss	Total loss	Some income loss	Some income loss	Some income loss	Some income loss	Total loss
Goats	Some income loss	Some income loss	Total loss	Some income loss	Some income loss	Some income loss	Some income loss	Total loss
Camel	Some income loss	Break even	Total loss	Some income loss	Some income loss	Some income loss	Break even	Total loss
Poultry	Break even	Break even	Total loss	Break even	Some income loss	Some income loss	Break even	Break even
Other								

What is the impact on livestock prices?	Dillo	Miyo	Dhas	Moyale	Yabello	Arero	Teltelle	Dire
Cattle	Very high	Very high	Medium	Very high	High	High	Very high	Very high
Sheep	Very high	Very high	Medium	Very high	High	High	Medium	Very high
Goats	high	Very high	Medium	Very high	High	High	Medium	Very high
Camel	high	Very high	High	High	High	High	None	Very high
Poultry	N/A	Medium	N/A	Medium	N/A	N/A	None	N/A

What has been the impact of the drought on natural resources?	Dillo	Miyo	Dhas	Moyale	Yabello	Arero	Teltelle	Dire
Pasture	very high	very high	Very high	Very high	Very high	Very high	High	High
Reserve pasture	very high	very high	Very high	Very high	Very high	Very high	Very high	High
Trees	high	very high	High	High	Very high	Very high	Low	High
Shrubs	medium	very high	High	Medium	Very high	high	High	High
Soil Erosion	medium	medium	Medium	Medium	N/A	Very high	Medium	N/A

What has been the impact of the drought on the health of animals?	Dillo	Miyo	Dhas	Moyale	Yabello	Arero	Teltelle	Dire
Cattle	high	Very high	Very high	Very high	High	High	Medium	High
Sheep	medium	Very high	Very high	High	High	High	Medium	High
Goats	medium	High	Very high	High	High	High	Medium	Medium
Camel	high	Medium	Very high	Medium	High	High	Low	Medium
Poultry	N/A	N/A	N/A	N/A	N/A	N/A	N/A	N/A

**Annex 5: Hygiene & Sanitation**

Question	Dillo	Miyo	Dhas	Moyale	Yabello	Arero	Teltelle	Dire
What proportion of people have sufficient clothing to ensure their health, dignity and well-being	50<75%	<25%	50<75%	25%>50%		25>50%	<25%	50<75%
What proportion of people have sufficient blankets and bedding for adequate thermal comfort	<25%	<25%	<25%	50<75%		<25%	25>50%	<25%
What proportion of those individuals most at risk have additional clothing and bedding to meet their needs(including infants and children, people with incontinence problems, people with HIV/AIDS, pregnant and lactating women, older people, disabled people)?	<25%	75>100%	<25%	50<75%		<25%	50<75%	<25%
What proportion of people have sufficient essential sanitary items to ensure their personal hygiene, dignity and well-being	<25%	<25%	<25%	50<75%		<25%	<25%	<25%
What proportion of people have sufficient containers to carry and store water	75>100%	75>100%	75>100%	<25%		<25%	<25%	75>100%

**Annex 6: Vulnerability**

<b>What % of women have adequate access to:</b>	<b>Dillo</b>	<b>Miyo</b>	<b>Dhas</b>	<b>Moyale</b>	<b>Yabello</b>	<b>Arero</b>	<b>Teltelle</b>	<b>Dire</b>
Health Care	0>20%	0>20%	0>20%	20>40%	60>80%	0>20%	0>20%	0>20%
Food	0>20%	0>20%	0>20%	20>40%	40>60%	0>20%	20>40%	0>20%
Water	0>20%	20>40%	0>20%	20>40%	40>60%	0>20%	20>40%	0>20%
Sanitation and Hygiene	0>20%	0>20%	0>20%	0>20%	40>60%	0>20%	0>20%	0>20%
Shelter	60>80%	40>60%	60>80%	80>100%	80>100%	80>100%	60>80%	60>80%

<b>What % of children have adequate access to:</b>	<b>Dillo</b>	<b>Miyo</b>	<b>Dhas</b>	<b>Moyale</b>	<b>Yabello</b>	<b>Arero</b>	<b>Teltelle</b>	<b>Dire</b>
Health Care	0>20%	0>20%	0>20%	20>40%	60>80%	0>20%	0>20%	0>20%
Food	0>20%	0>20%	0>20%	20>40%	40>60%	0>20%	20>40%	0>20%
Water	0>20%	20>40%	0>20%	20>40%	40>60%	0>20%	20>40%	0>20%
Sanitation and Hygiene	0>20%	0>20%	0>20%	20>40%	40>60%	0>20%	0>20%	0>20%
Shelter	60>80%	40>60%	60>80%	80>100%	80>100%	80>100%	60>80%	60>80%

<b>What % of older people have adequate access to:</b>	<b>Dillo</b>	<b>Miyo</b>	<b>Dhas</b>	<b>Moyale</b>	<b>Yabello</b>	<b>Arero</b>	<b>Teltelle</b>	<b>Dire</b>
Health Care	0>20%	0>20%	0>20%	20>40%	60>80%	0>20%	0>20%	0>20%
Food	0>20%	0>20%	0>20%	0>20%	40>60%	0>20%	0>20%	0>20%
Water	0>20%	0>20%	0>20%	0>20%	40>60%	0>20%	20>40%	0>20%
Sanitation and Hygiene	0>20%	0>20%	0>20%	0>20%	40>60%	0>20%	0>20%	0>20%
Shelter	60>80%	40>60%	60>80%	60>80%	60>80%	60>80%	60>80%	60>80%

<b>What % of people with disability or illness have adequate access to:</b>	<b>Dillo</b>	<b>Miyo</b>	<b>Dhas</b>	<b>Moyale</b>	<b>Yabello</b>	<b>Arero</b>	<b>Teltelle</b>	<b>Dire</b>
Health Care	0>20%	0>20%	0>20%	0>20%	60>80%	0>20%	0>20%	0>20%
Food	0>20%	0>20%	0>20%	20>40%	40>60%	0>20%	20>40%	0>20%
Water	0>20%	20>40%	0>20%	20>40%	40>60%	0>20%	20>40%	0>20%
Sanitation and Hygiene	0>20%	0>20%	0>20%	0>20%	40>60%	0>20%	0>20%	0>20%
Shelter	60>80%	40>60%	60>80%	60>80%	60>80%	60>80%	60>80%	60>80%

<b>Any cases of physical or sexual violence against:</b>	<b>Dillo</b>	<b>Miyo</b>	<b>Dhas</b>	<b>Moyale</b>	<b>Yabello</b>	<b>Arero</b>	<b>Teltelle</b>	<b>Dire</b>
Women	No	No	No	No	No	No	No	No
Children	No	No	No	No	No	No	No	No
Older people	No	No	No	No	No	No	No	No

Predominately family and the wider community take care of older and sick people

<b>What are the major risks to people?</b>	<b>Dillo</b>	<b>Miyo</b>	<b>Dhas</b>	<b>Moyale</b>	<b>Yabello</b>	<b>Arero</b>	<b>Teltelle</b>	<b>Dire</b>
Theft	Not likely	<b>Risk</b>	No risk	<b>Risk</b>	No risk	No risk	Not likely	Not likely
Violence	Not likely	No risk	No risk	No risk	No risk	No risk	Not likely	Not likely
Discrimination	Not likely	No risk	No risk	No risk	No risk	No risk	Not likely	Not likely
Inter-communal disputes	Don't know	No risk	<b>risk</b>	No risk	No risk	No risk	Don't know	Don't know

**[Ends Here]**